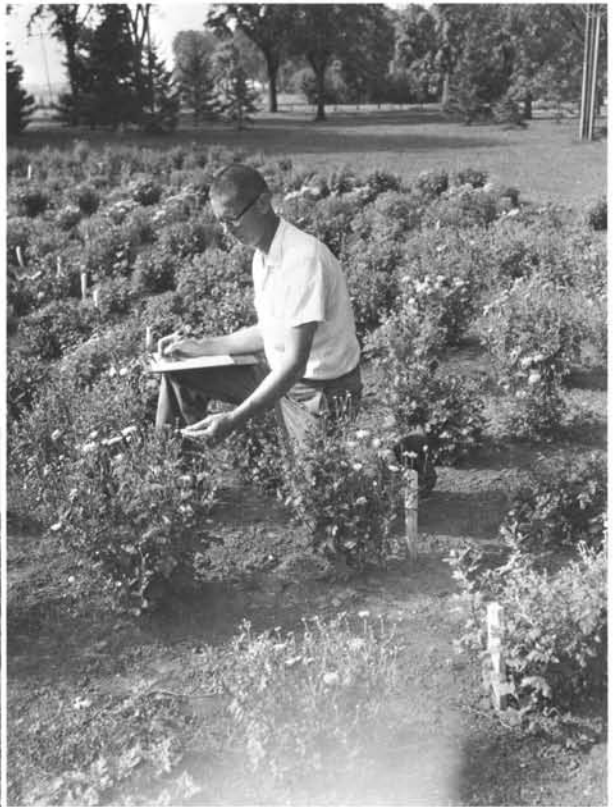


# Research

Fruit growing can be hazardous and disappointing in the Red River Valley. Patience may bring with some fine quality fruit. Apples, crabapples, plums, apricots, and cherries have fruited in the test orchard at the Northwest School. The small fruits such as strawberry, raspberry, grape, gooseberry, and currant are a little more dependable than the tree fruits. Winter killing of the plants is the main problem.



Garden flower trials receive a lot of attention here at the station. Perennials are grown and observed for their performance under conditions in this area. Chrysanthemums have done well and have been grown extensively. A colorful showing of mums in late summer is the rule at the Northwest School campus.

