

we love and we think we are loved.



DARLENE LARSON



HERBERT LAW



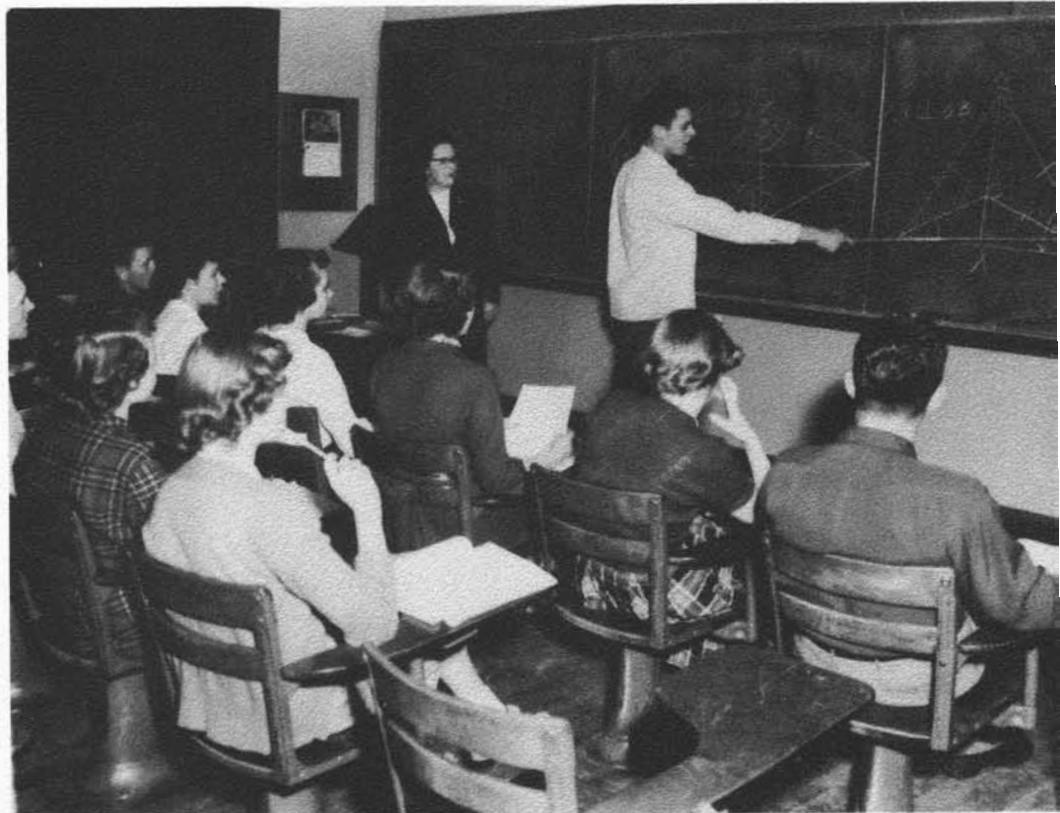
RONALD LUSSO



YONA MAGNUSSON

DARLENE LARSON, glee club 1, 2, 3, 4; choir 2, 3, 4; triple trio 3, 4; Homecoming Queen attendant 4. HERBERT LAW, basketball 1; track team 3, 4; livestock judging 2, 3; crop judging 3. RONALD LUSSO, swimming 1, 2. YONA

MAGNUSSON, glee club 2, 3, 4; choir 2, 3, 4; Tri-Hi-Y 2, 3, 4, officer 3; Aggie 4; song contest director 3; class officer 2, 4; Carnival Queen 2; triple trio 2, 3, 4.



Can this be an incongruent congruent angle?