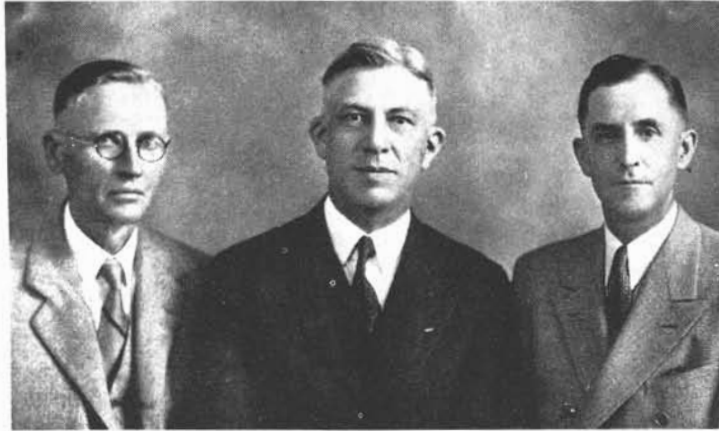


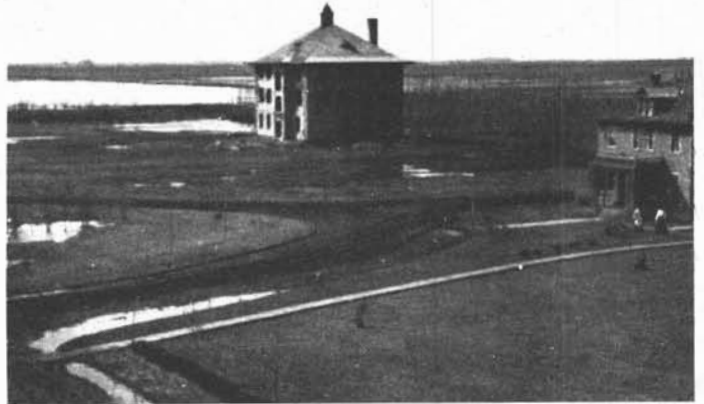
Fiftieth Anniversary—Past



Former Superintendents of Experiment Station (left to right)
T. A. Hoverstad, 1895-1905; C. G. Selvig; 1910-1927; A. A.
Dowell, 1927-1937.



Station in 1896



School in 1906



Campus in 1908, Stephens Hall in
construction



Northwest School in 1911

As the earth is humble and productive so is the heritage of our school. The work of our hands, the nourishment of our bodies is in the soil. The Creator lifted up the common soil and breathing life into it made it immortal and noble.

For fifty years this Experiment Station has worked the same soil and made it productive and nourishing. Our own Superintendent McCall is a fitting, living symbol of the progress, zeal and idealism it has perpetrated.