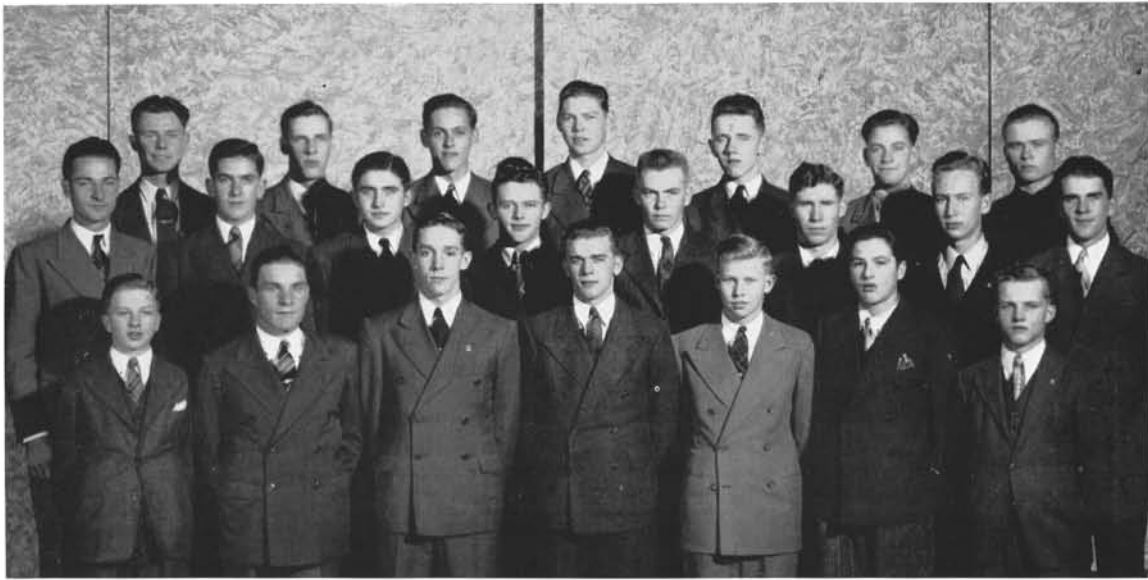


## BOYS' GLEE CLUB



Back row: (left to right) W. Wold, D. Hanson, V. Hoppe, E. Nelson, I. Johnson, E. Lerud, J. Christensen.  
Second row: R. Morrison, I. Magnusson, H. Hoff, G. Grothe, F. Dahl, D. Milner, M. Nelson, A. Knutson.  
Third row: K. Hanson, D. Barry, C. Sargent, C. Knutson, M. Madson, G. Vasilakes, E. Scholin.

Under the direction of Miss Bierbauer, the Boys' Glee Club meets every Tuesday at 11:35. This organization consists of those boys who are most interested in singing. Throughout the year the Boys' Glee Club has made appearances on Parents' Day program, Christmas Program, and Commencement exercises.

Glee Club offers training so that the boys are enabled to learn to sing parts and also to

develop a better appreciation of vocal music. The repertoire includes hymns, classics, negro spirituals and folk songs. The personnel of the group includes members of the freshmen, junior, senior and advanced classes. That the boys appreciate their opportunity to meet once each week for singing purposes is evidenced by the regular attendance.

### PERSONNEL

Harold Aasland  
Dale Barry  
Jack Christensen  
Floyd Dahl  
Elmer Erickson  
Gaylord Grothe

Donald Hanson  
Kent Hanson  
Henry Hoff  
John Hoglin  
Vernon Hoppe  
Irwin Johnson

Alton Knutson  
Carlton Knutson  
Erling Lerud  
Milton Madson  
Iden Magnusson  
Donald Milner

Roland Morrison  
Ernest Nelson  
Marion Nelson  
Clarence Sargent  
Einar Scholin  
Duane Wallsberg  
Wilford Wold