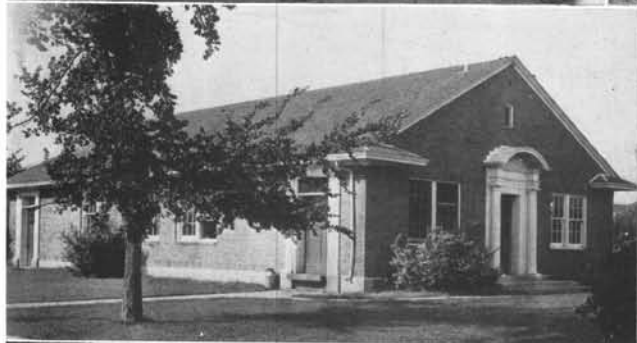


# EXPERIMENT STATION



The University of Minnesota, in co-operation with the United States Department of Agriculture, carries on experimental work in agriculture at the Northwest School. The station comprises approximately 900 acres, and furnishes a laboratory for the work of the school. Information concerning the methods employed at the station is always available to the students of the school and to farmers in northwestern Minnesota.

Experimental work is carried on in agronomy, soils, horticulture, agricultural engineering, and animal husbandry. Station herds and flocks include Purebred Holsteins, Shorthorn cattle, purebred Percheron horses, Shropshire sheep, Poland China hogs, and White Leghorn and Rhode Island Red chickens.

Above are pictured a few of the buildings of the Northwest Experiment Station.