

Wheat and barley proved to be the most efficient grain combination from the standpoint of egg production. The average egg production on this combination was 59.4 per cent compared with 54.3 per cent on corn and oats; 54.2 per cent on wheat and corn; 54.0 per cent, wheat and oats; 53.8 per cent barley and oats, and 53.3 per cent on the barley and corn combination. Mortality during the laying season varied from 12.6 per cent in the barley and corn pen to 20.0 on wheat and barley. Mortality appeared to increase with the increase in egg production, although there was some variation from pen to pen. Fertility varied from 90.7 to 92.4 per cent, with the highest fertility in the pens with the lowest egg production.

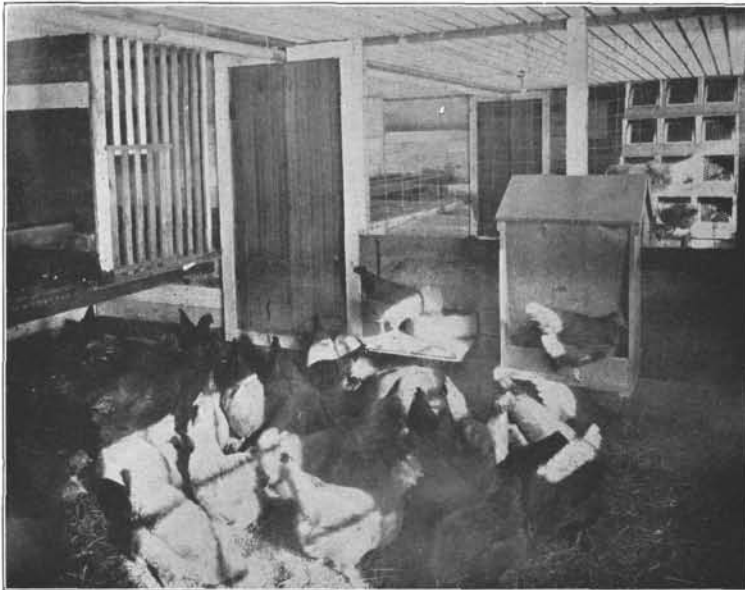
There appeared to be no relationship between hatchability and egg production, although there was considerable variation from pen to pen. Hatchability varied from a minimum of 62.5 per cent on corn and oats to a maximum of 68.3 per cent on wheat and corn.

Feeding Newly Hatched Chicks

Chick feeding trials indicated that the custom of fasting chicks from two to three days after hatching should

be discontinued. Chicks fasted for 48 hours lost 31.9 per cent of their original body weight, while those fasted for 72 hours suffered a loss in weight of 44 per cent. Chicks fed immediately after hatching made an average gain in weight of 229 grams per chick during the first three weeks after hatching, while fed at 24 hours made an average gain of 266 grams and chicks fasted 72 hours gained 186 grams during the three-week period. In these trials, best results followed feeding 24 hours after hatching.

Beginning with the season of 1935 renewed efforts are being placed on pedigree breeding and progeny testing. 1696 chicks were pedigreed in 1935 and it is hoped that 100 per cent of the flock will be pedigreed in 1936 from pedigreed parentage of known history. Emphasis is being placed on increased quality to make the useful more beautiful and the beautiful more useful; to make the show bird a record egg producer that will reproduce herself manyfold.



Interior of Main Laying House

