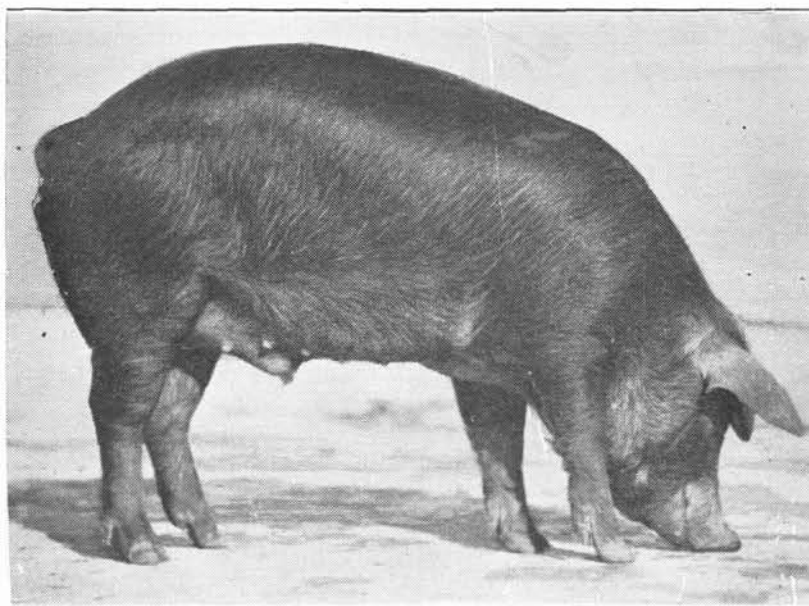




*Beef Feeding Trials*

used in trials since 1922. In the roughage trials clover was found to be equal to alfalfa for wintering yearling steers, when fed with corn silage and oat straw. Two-year-old steers receiving sweet clover hay with a fattening ration of ground barley, linseed oil meal and corn silage gained 2.86 pounds per day compared to 3.02 pounds per day for steers fed alfalfa with the same fattening ration. Results with barley showed that it could

successfully replace corn in regions where corn cannot be grown to advantage. Wheat as a fattening grain was studied and found equal to barley, its desirability as a feed depending on the price. Rye was found less palatable than other grains, its disadvantage increasing with the length of feeding period and percentage of ergot. Molasses beet pulp proved equal to barley for fattening beef calves; both together were more efficient than bar-



*Prize Barrow 1923*

