

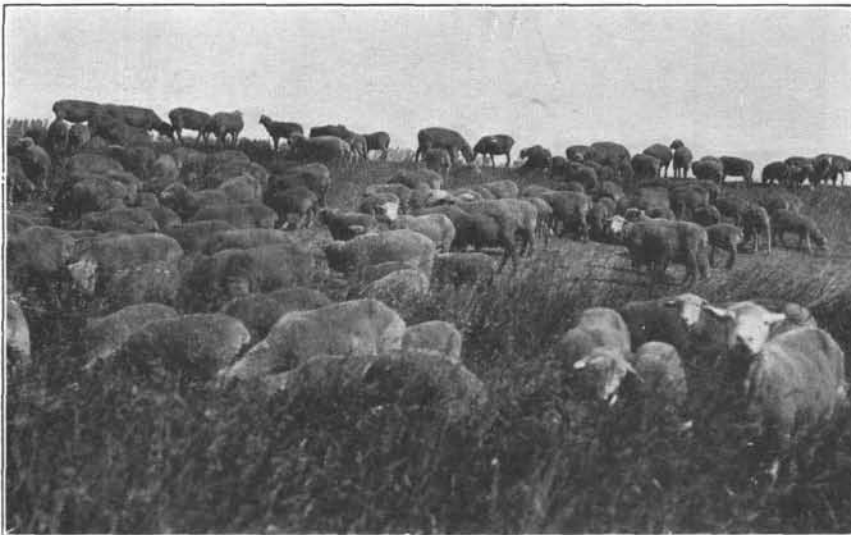
*Station Flock*

Winter Shows livestock exhibit was held and in 1919, for want of exhibit space and as a result of promotional work by Mr. Selvig and the staff, the Winter Shows building was constructed.

Experimental work from 1911 to 1918 under Mr. Dietrich included beef breeding trials comparing silage and corn fodder, hog feeding trials to determine the effects of high protein rations, use of flax as protein supplement, and self-feeding of grains to hogs and sheep. W. V. Gousseff replaced Mr. Dietrich in 1918 and had

charge of the work until 1920. Mr. John Husby served as animal husbandman in 1920-21. O. M. Kiser was appointed in 1921, and has been in charge of all livestock since, except for a year's leave in 1930-1931.

Experimental work since 1922 has included feeding trials with beef cattle, breeding trials with hogs and sheep and pasture trials with dairy cattle. The beef trials have involved the use of roughages and grains common to the Red River Valley. A total of 336 beef steers have been



*Pasture Trial*

