



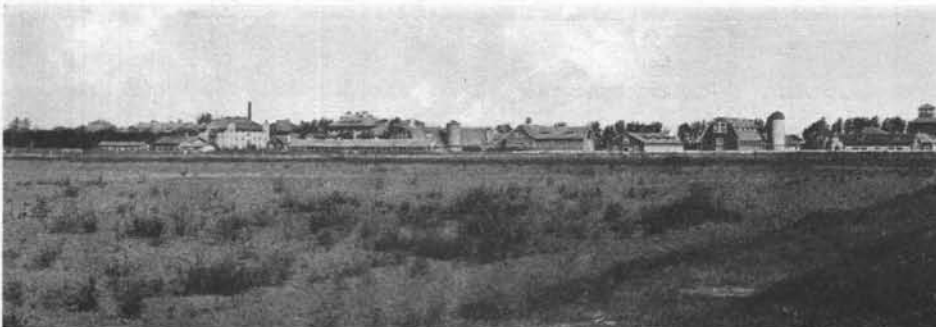
1919

ATTENDANCE RECORDS

Year	Regular Course	Junior Short Course	Year	Regular Course	Junior Short Course	Women's Short Course
1906-07	31		1921-22	215	77	
1907-08	41		1922-23	190	109	
1908-09	101		1923-24	187	112	
1909-10	129		1924-25	271	273	
1910-11	140		1925-26	289	191	127
1911-12	160	21	1926-27	300	230	129
1912-13	136	47	1927-28	298	254	112
1913-14	161	58	1928-29	319	288	141
1914-15	179	46	1929-30	353	376	134
1915-16	208	81	1930-31	316	264	111
1916-17	205	60	1931-32	245	382	109
1917-18	196	88	1932-33	184	828	88
1918-19	198	122	1933-34	288	1009	103
1919-20	301	182	1934-35	329	875	150
1920-21	225	77	1935-36	394		

The trend in enrolment was steadily upward from 31 in 1906-07 to 160 in 1911-12. A decline in 1912-13 was followed by another advance to 208 in 1915-16. With

the exception of 1919-20 when the attendance was stepped up sharply due to the enrolment of a number of World War veterans, there was comparatively little



1926

