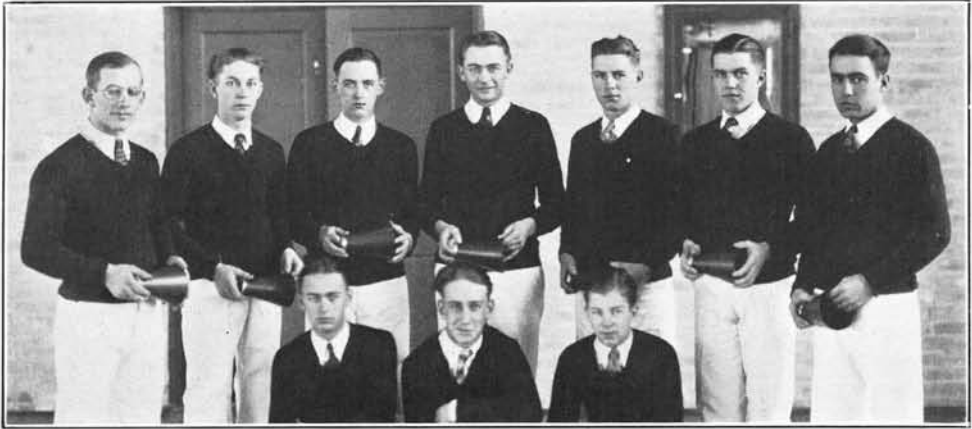


The Pepsters



BACK ROW: Peterson, Anderson, Lindstrom, Hoff., Bedard, Harstad, Nornes.
FRONT ROW: Degerness, Holmes, Steenerson.

Clad in gleaming white trousers with maroon and gold sweaters, the Pepsters are a dashing line of pep as they run out on the floor at pep-fests and games. They are under the direction of Mr. Mlinar and their singing of Minnesota Songs has done much to increase the school spirit.

The Boys' Glee Club

The big work of the Boys' Glee Club aside from their other work as part of the Mixed Chorus, is their singing with the Northwest Singers on Friday night of the Winter Shows week. Here they lend able support year after year. They also sing at various school functions during the term.



TOP ROW: Avery, Sundrud, McCall, Widseth, Pearson, I. Anderson, Hoff.
SECOND ROW: Holmes, H. Nornes, Bedard, E. Hanson, Miss Polski, Miss Peterson, Donley, Schroeder, Bursheim, Pederson.
FIRST ROW: Ivan Anderson, Lindstrom, Harstad, Elton, Tangjerd, Letnes, B. Nornes, Degerness.