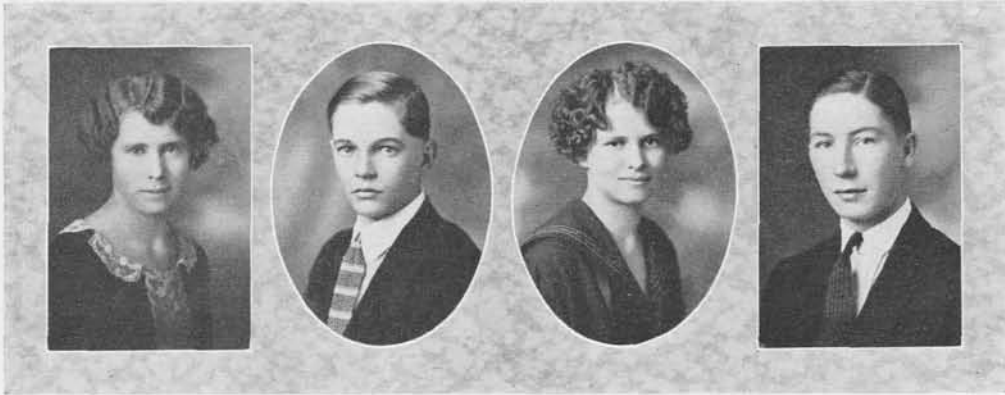


THE RED RIVER AGGIE



CORA SORENSON

*"What did you say?"*

PLUMMER

Home Economics.

Thesis—Color and Appropriateness of Dress.

*"She's never idle a moment, but generous and thoughtful of others."*

ROSS JACOBSON

*"Well, look here! If — —"*

HITTERDAHL

Lincoln.

Thesis — Protection and Care of Wild Birds.

*"And still the wonder grew, that one small head could carry all he knew."*

DELLA STROMMER

*"Absolutely kid!"*

CLEARBROOK

Aggie Board; Home Economics; Glee Club.

Thesis—Alterations of Patterns.

*"The mildest manners and the gentlest heart."*

EINAR LOVEN

*"Want a hair cut ? ? ?"*

GATZKE

Glee Club; Lincoln; Orchestra; Band; Song and Yell leader.

Thesis—Alfalfa.

*"How often the highest talent lurks in obscurity."*



BENNETH SHARPE

*"I should worry."*

SHELLY

Glee Club; Pioneer; Octette.

Thesis—Windbreaks.

*"Anything for a quiet life."*

AMY ONNELAND

*"Aw, fie."*

EAST GRAND FORKS

Aggie Board; Sanford; Y.W.C.A. cabinet.

Thesis—The Art of Cake-making.

*"Small in stature but active in thoughts and deeds."*

CLARENCE OFSTEDAHL

*"Where's Violet?"*

FERTILE

Aggie Board; Glee Club; Lincoln; Orchestra; Football; Octette.

Thesis—Alfalfa.

*"For to be wise and love, exceeds man's might."*

EMMA SATRE

*"Why, how lovely."*

THIEF RIVER FALLS

Glee Club; Home Economics.

Thesis—Muffin Making.

*"Quiet and sincere."*