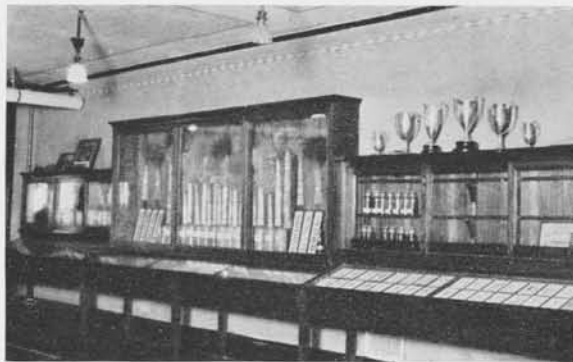


THE RED RIVER AGGIE



WHEAT GROWN CONTINUOUSLY AND IN ROTATION

our seasons 10,600 bushels of purebred seed grain and 450 bushels of seed corn have been distributed among the farmers of Northwestern Minnesota and 384 growers have cooperated by growing these seeds and selling them to their neighbors.



IN THE MUSEUM