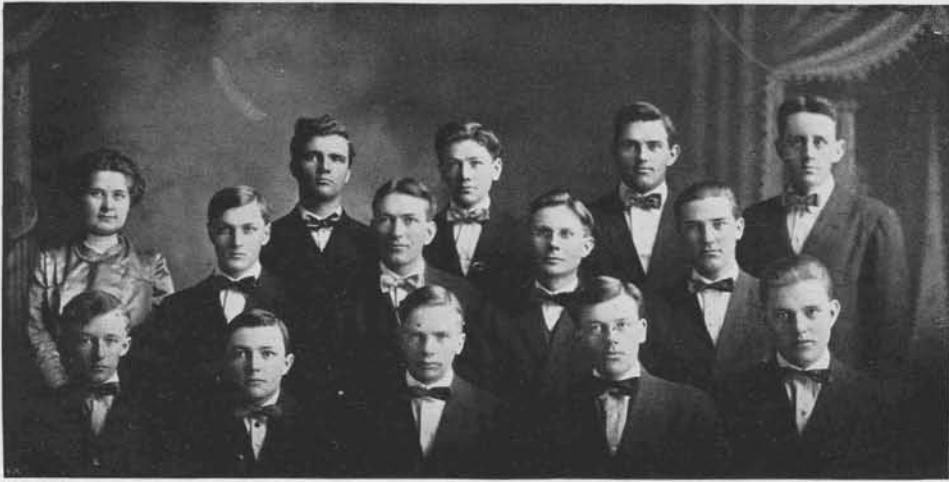


Boys' Glee Club



Top row: Billings, Skibness, Lovas, Lee, Second row: Miss Hovey, director, Pederson, Erlandson, Lindquist, Frederickson. Bottom row: Hannah, Huot, Palm, Dahl, and Landby.

School Band



Standing: Vaaler, Buhr, Lutness, Westad, Harrington, Pederson, Rexroat. Seated: Wurdén, Raitan, Rexroat, Erlandson, Mr. Schwartz, director; Lieberg, Skibness, Rexroat and Hanson.

Musical Department

The musical department of the N. W. S. A. was organized in the fall of 1912. The aim of this department is to develop the students that they may take the initiative in musical lines at their home centers and thus become potent factors in rendering country life more attractive.

The musical department has been of great service to the school in many ways. The Glee Club had its beginning last fall and has been working hard all winter.

The band was organized about three years ago by a number of students who wished to learn more about music. Under the able leadership of Mr. Schwartz it has made considerable progress.